



Keeping students and patients safe in-transit

With their eyes focused on the road, it can be difficult for student shuttle and paratransit drivers to be tuned into the internal bus environment and any challenges that may arise. But if a driver's attention is diverted from the road, it presents additional safety risks.

Now fleet managers can protect passengers and drivers, reduce risk, and resolve liability claims faster with the March Networks® mobile video solution. This enterprise-class solution monitors all activity on and around the buses, and provides critical features, such as GPS and vehicle data integration, for improved operational awareness and efficiency.

Manage your fleet's on-board environment and keep passengers safe

The fast-paced environment of a college campus — serving faculty and students with time-sensitive schedules around the clock — may demand as much from transit providers as a busy metropolitan area. Each day, potentially thousands of passengers jump on and off the shuttle along its designated route, as the convenience and price have made this a popular mode of transportation on and off campus. Some college campus transportation systems may also offer demand responsive transit and point-to-point shuttle service.

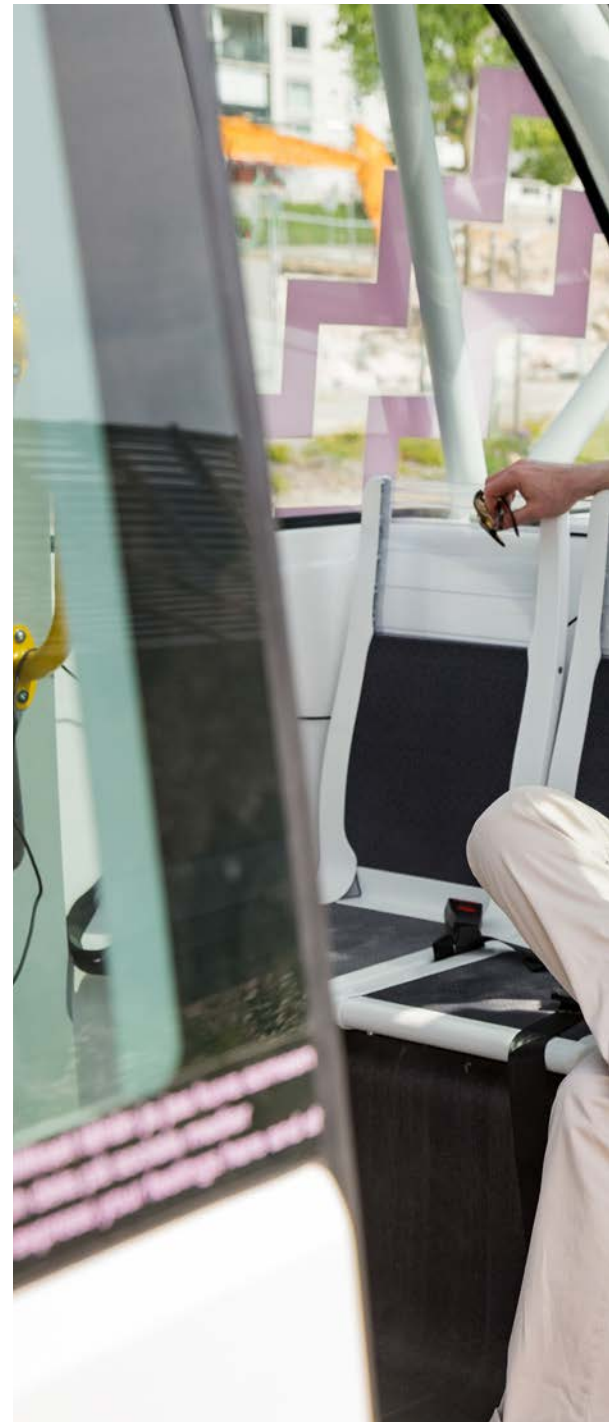
In the patient transport world, drivers are dealing with passengers of varying physical and mental capabilities. It is critical that drivers maintain route compliance, that all safety regulations are adhered to, and that interaction between drivers and patients is documented at all times. The ability to effectively manage the risks related to these transports requires rock solid evidence, both video and vehicle data.

Their ridership may be different, and some of their challenges unique. But the student shuttle and patient transfer activities both require a solution that delivers enterprise-class video surveillance monitoring and management to help keep their ridership and employees safe.

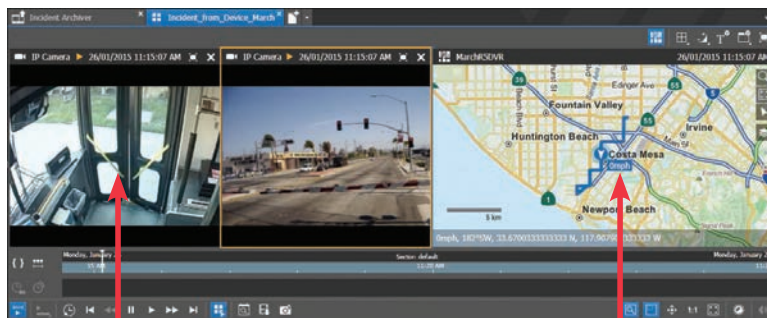
Get the whole picture by integrating GPS and vehicle data parameters

Integrated GPS information (speed, location, direction) and vehicle data (e.g., bus number, operator ID, impact, hard brake, door open/closed) gives you a comprehensive view of onboard activity, and the video and vehicle data can serve as reliable evidence in the event of an investigation. All of the video and data can be extracted, archived, and synchronized for playback.

GPS mapping shows vehicle route and GPS data, which can be used as evidence for cases. In emergency situations, responders can access critical, live, in-vehicle video and audio via wireless handheld or laptop computers, in conjunction with real-time mapping. All data can be archived for post-incident investigation and evidence preparation.



An Incident tab



Views from cameras show what was happening inside and outside the bus at the time of the incident

GPS map showing the route at the time of the incident

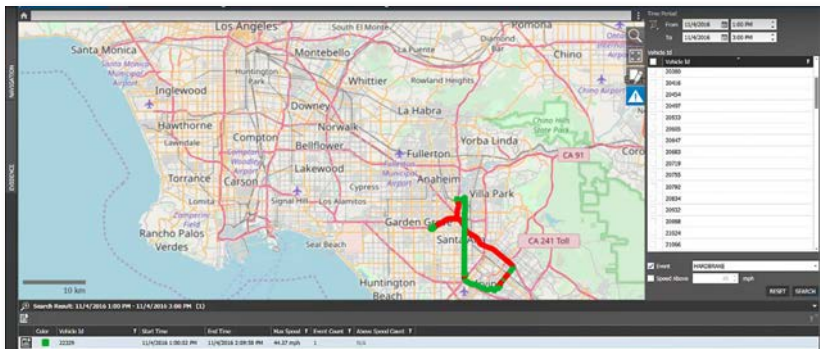


Automatically retrieve video and initiate software updates via Wi-Fi

Wireless technology is here to help. As vehicles enter maintenance yards, fueling depots or other Wi-Fi areas, high-speed video extraction and automated maintenance functions (such as NVR checks or software updates), can be performed without manual intervention. There's no need to board numerous vehicles.

Find the evidence you need quickly

Use our innovative investigation tools find event evidence quickly, with integrated video and vehicle metadata. You'll get a visual overview of what's happening on all routes, complete with details on recorded events such as speed, hard-brakes, door malfunctions, impacts, and panic buttons. You can search by date, time, event, speed and geography to find the evidence you need, fast and cost-effectively, then download that evidence. You'll never have to pull hard drives from vehicles or spend hours searching for the right video clip.



Three ways to easily respond to events

- 1 Configure automatic system responses to alarms. Multiple alarms coming in from different recorders can be handled simultaneously with the help of pre-programmed actions for video, audio and event data.
- 2 Operators are presented with step-by-step procedures to follow in the event of an alarm, and the system maintains a record of events, the associated video, and subsequent operator actions.
- 3 Instantly find and export critical video. Frame-by-frame playback assists with the identification of a potential suspect, and makes it easier to select and export recorded video and any vehicle metadata, GPS, and audio evidence from single or multiple cameras. All evidence is digitally signed to avoid tampering; this guarantees that the evidence you share with authorities is reliable. Export a collection of videos and metadata as a case, and store that case for further investigation.



System reliability and monitoring
It's easy to keep all of your devices working optimally, as you'll be alerted — in real-time — in the event of a camera disconnection, a recording or disk issue, high processor or fan temperatures, or other problems that can occur on the vehicle. You can even decide how significant the situation must be before the system sends an alert. This system information is communicated when the vehicle is within wireless range at the depot, or the information can be delivered real-time via 4G/LTE cell connectivity.

A solution that's custom-designed for student shuttles and patient transfer vehicles.

Every aspect of this portfolio has been specifically designed to help increase safety and reduce risk, and help you manage your fleet's on-board and wayside environments like never before.

March Networks Command™ for Transit

This scalable enterprise management solution supports both mobile and fixed video surveillance under the same umbrella, with the same user interface. The innovative software allows you to efficiently monitor all of your locations and assets — buses, shelters, campuses, maintenance yards, and more — seamlessly incorporating all surveillance operations within a single user interface.



March Networks RideSafe™ MT IP Recorder

Available in 4 and 6-channel models, this all-IP recording and management solution lets you record everything that's happening on the bus, inside and out. Whether you have one or a thousand buses, this plug-and-play recorder can operate as a standalone unit or be remotely managed and monitored daily. It can integrate into your existing CAD and AVL systems and mobile routers, or it can operate independently. The recorder's compact size, rugged design, and wide range of interfaces and communications options meet all of the mobility industry's standards.



Mobile Cameras

We offer a variety of mobile cameras to monitor activity in and around the vehicle. Get glare-free, high-quality video through the vehicle's windshield and on the exterior of the bus, in both direct sunlight and near-dark conditions. Built to withstand the harsh conditions of the transit environment, these cameras are shock and vibration hardened, dust and weatherproof, and vandal-resistant.



In-Vehicle Driver Monitors

Increase driver awareness and passenger safety by showing live video from the critical cameras on your vehicles. These high-res monitors allow drivers to see clear images from cameras mounted at critical locations on the vehicle's interior and exterior. They can also improve night time driving visibility, reduce litigation costs, and help prevent avoidable collisions.



Mobile Peripherals

Enhance security and situational awareness with our line of mobile peripheral devices, including GPS module, wireless adaptor, onboard microphone, and system status module. Record vehicle location, speed and audio, as well as manually-triggered alarms and aggressive driving incidents.



Learn more about how the March Networks Mobile Solution can help protect passengers and drivers, reduce risk, and resolve liability claims faster for student shuttles and patient transfer vehicles. marchnetworks.com/shuttle

North America 1 800 563 5564
Latin America +5255 5259 9511
Europe +39 0362 17935
Asia +65 6818 0963
Australia and New Zealand +61 1300 089 419
Middle East and Africa +971 4 399 5525

© 2018 March Networks. All rights reserved. Information in this document is subject to change without notice. MARCH NETWORKS, March Networks Command, March Networks Searchlight, March Networks RideSafe, and the MARCH NETWORKS logo are trademarks of March Networks Corporation. All other trademarks are the property of their respective owners. 060-3359-00-B marchnetworks.com

